



Design Caster

ACC-CAS



Manufactured by metal cutting and mirror finishing

Minimalist design with no ornamentation

- Tires and wheels are hollow ring-shaped cavities with no rotating shafts
- The ultimate simple design with no screws by a special manufacturing process that utilizes two types of craftsmanship: baked fit and chilled fit
- Body and wheels are made of sturdy stainless steel
- Independent use of high quality Japanese sealed bearings on both wheels
- Beautiful mirror finish on the material itself, not plating
- Tire material is impact-resistant nylon*
* Rigid urethane material for hard floors is a made-to-order, chargeable option



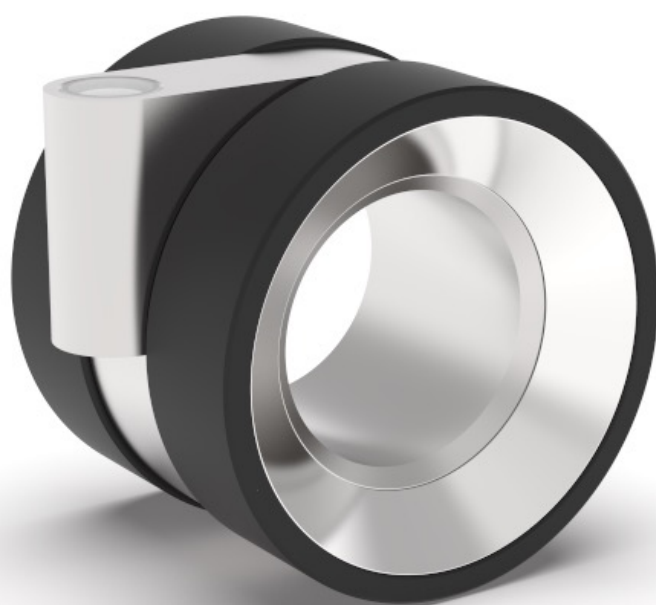
Made in Japan by RE · LEAF Inc.

※ The images shown in this document are illustrations only. Actual products may differ in detail specifications, color, etc.
Specifications, appearance, finish, etc. are subject to change without notice due to product improvement.

Design



Design



Design

